

# Modeling Melanoma Resistance to Therapy: THE TOOLBOX

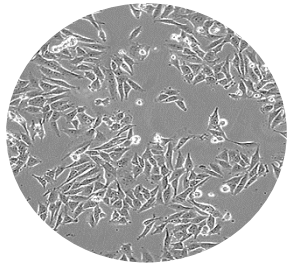
Please develop this toolbox during the presentation by filling in the boxes according the questions below:

What is this?  
(ex): Western Blot

Why is it useful?  
(ex): Tells us how much protein is present

What does it do?

## MODEL SYSTEMS



\_\_\_\_\_

\_\_\_\_\_

\_\_\_\_\_

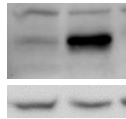


\_\_\_\_\_

\_\_\_\_\_

\_\_\_\_\_

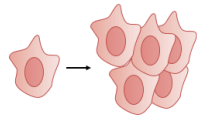
## MEASURING TECHNIQUES



\_\_\_\_\_

\_\_\_\_\_

\_\_\_\_\_



\_\_\_\_\_

\_\_\_\_\_

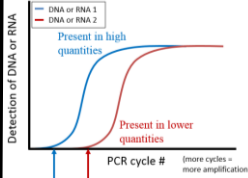
\_\_\_\_\_



\_\_\_\_\_

\_\_\_\_\_

\_\_\_\_\_

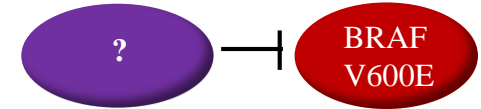


\_\_\_\_\_

\_\_\_\_\_

\_\_\_\_\_

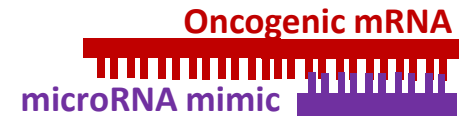
## THERAPIES



\_\_\_\_\_

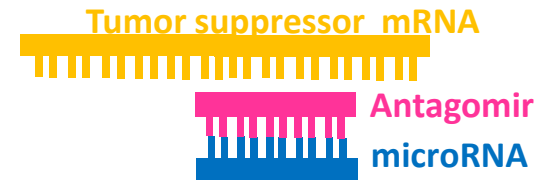
\_\_\_\_\_

\_\_\_\_\_



\_\_\_\_\_

\_\_\_\_\_



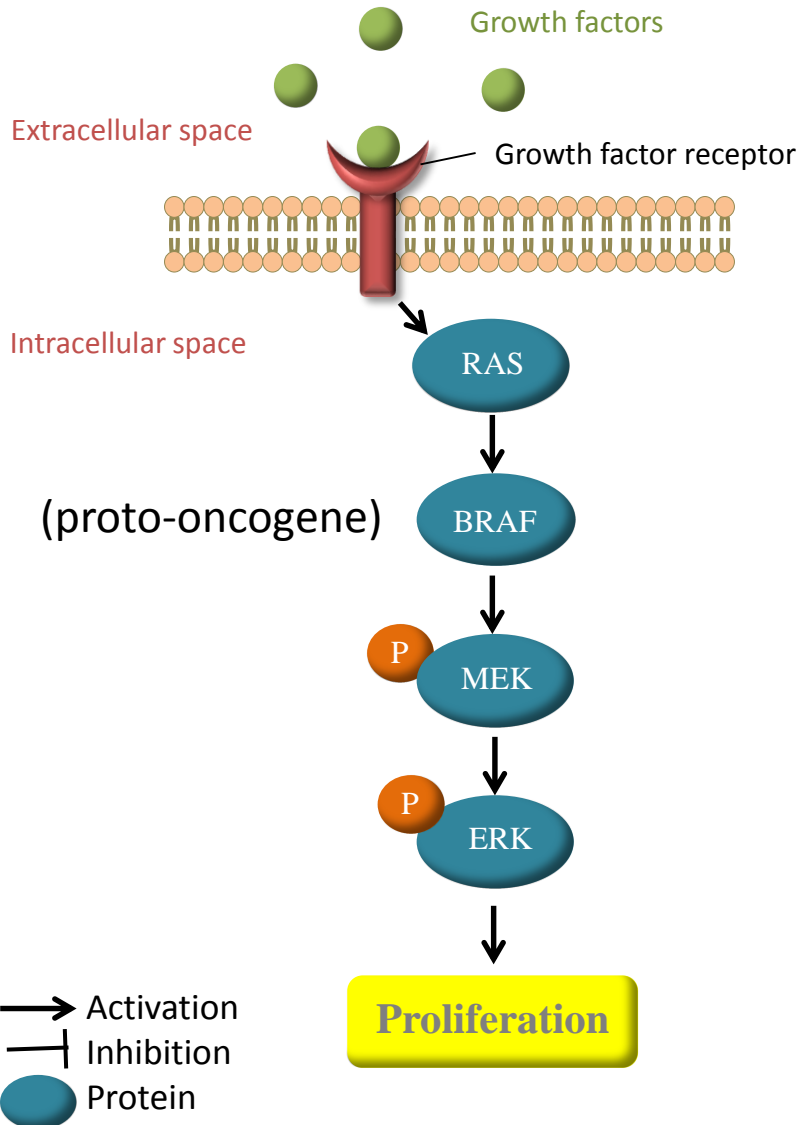
\_\_\_\_\_

\_\_\_\_\_

# BRAF V600E mutation leads to hyperactivation of the proliferation MAPK pathway

## MAPK pathway

### Physiological conditions (no cancer)



### BRAF V600E tumors

